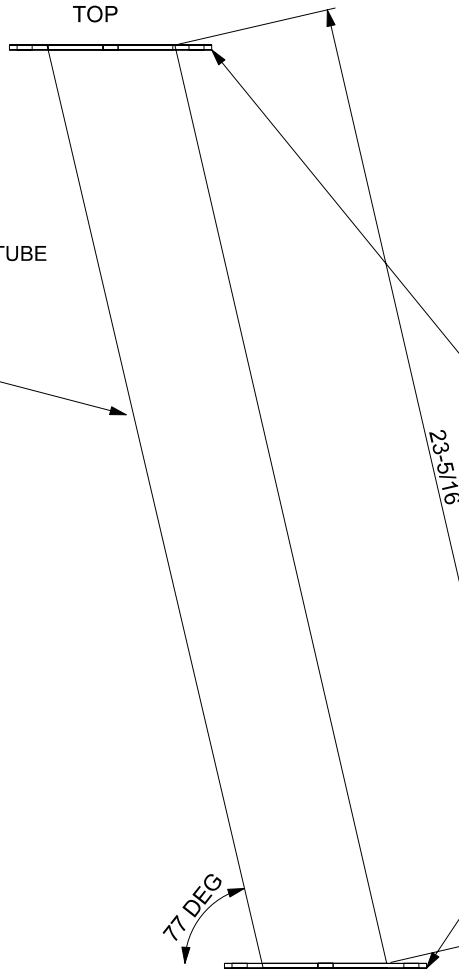


SIDE VIEW

2-1/2" OD POLISHED STAINLESS TUBE
.065 WALL

TOP AND BOTTOM PLATES
PARALLEL TO EACH OTHER



TOP AND BOTTOM FLANGES

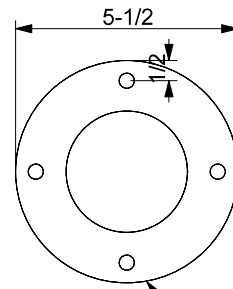


PLATE .120 11 GA POLISHED STAINLESS (302/403)
HOLE IN PLATE EQUAL TO INSIDE DIA OF TUBE
13/32" HOLES IN EACH PLATE FOR 3/8" BOLTS
MAKE SURE WELDS ARE STRONG

BOTTOM PLATE, SAME AS TOP PLATE
EXCEPT 3/16 THICK (7 GA)

PEDESTAL BASE

MACGREGOR 26M: PER BOAT 1 EA

DRAWING DATE: NOV 3 2005

MACGREGOR PART NUMBER: 562